



City of
Apache Junction

SILLY MOUNTAIN PARK

TRAIL NAME	MILEAGE	LEVEL
------------	---------	-------

BRITTLE BUSH TRAIL	0.4 MILES	EASY
COYOTE LOOP TRAIL	0.1 MILES	MODERATE
CREST TRAIL	0.3 MILES	MODERATE
HIGH POINT TRAIL	150' FEET	EASY
HUFF & PUFF TRAIL	0.2 MILES	DIFFICULT
JACKRABBIT TRAIL	0.2 MILES	MODERATE
OLD BALDY TRAIL	0.2 MILES	MODERATE
OLD MINE TRAIL	0.3 MILES	DIFFICULT
SUPERSTITION VIEW TRAIL	0.7 MILES	EASY
PALO VERDE TRAIL	0.4 MILES	EASY
SUPERSTITION VIEW TRAIL	0.4 MILES	EASY
BOTANICAL WALK TRAIL	0.3 MILES	EASY

MOUNTAIN RD.

36TH AVE.

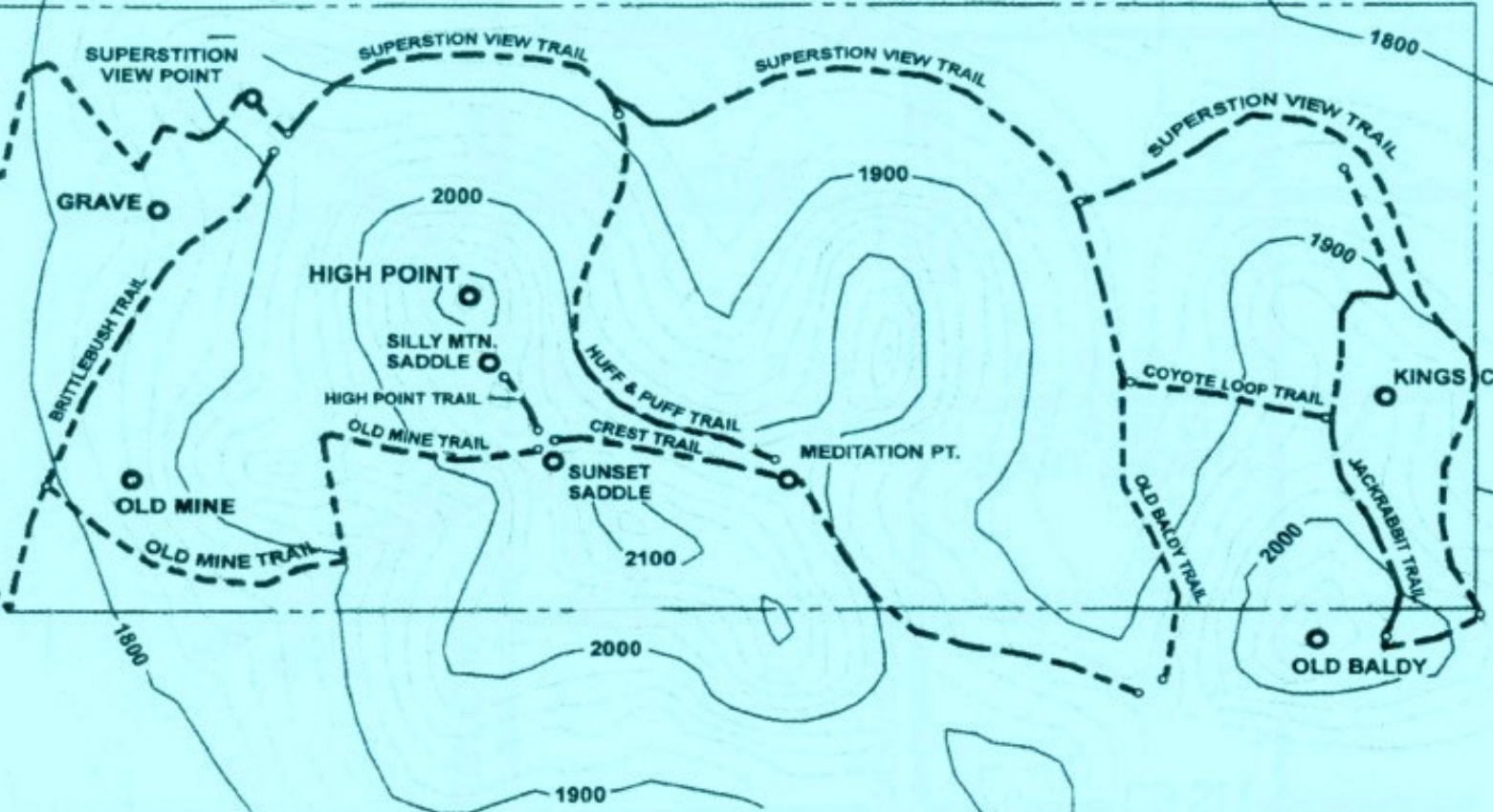
SILLY

PARKING

HIGHWAY U.S. 60

Apache Junction
parks & recreation
the benefits are endless...

1001 N. Idaho Rd. - Mon-Thurs 7am - 6pm
www.ajcity.net/parks / 480-983-2181



● POINT OF INTEREST

○ — — — ○ TRAIL

*CONTOUR INTERVAL IS 20' (FEET)

